

Caswell County Data: An In-depth Look at Children Birth to Age 5 2010-11 Results

Highlights from the report prepared in July 2012 by EDSTAR Analytics, Inc.

Janet Johnson, Ph.D, Alexa Stafford, Bridgette Burge

I. Demographics:

Table 1. General Demographic Information from 2010 Census

Census Category	Caswell County	North Carolina
Population 2010	23,719	9,535,483
Population, percent change, 2000 to 2010	0.9%	18.5%
Persons under 5 years, percent, 2010	5.0%	6.6%
High school graduates, percent of persons age 25+, 2006-10	75.0%	83.6%
Median household income 2006-2010	\$36,927	\$45,570
Persons below poverty level, percent, 2006-2010	21.7%	15.5%

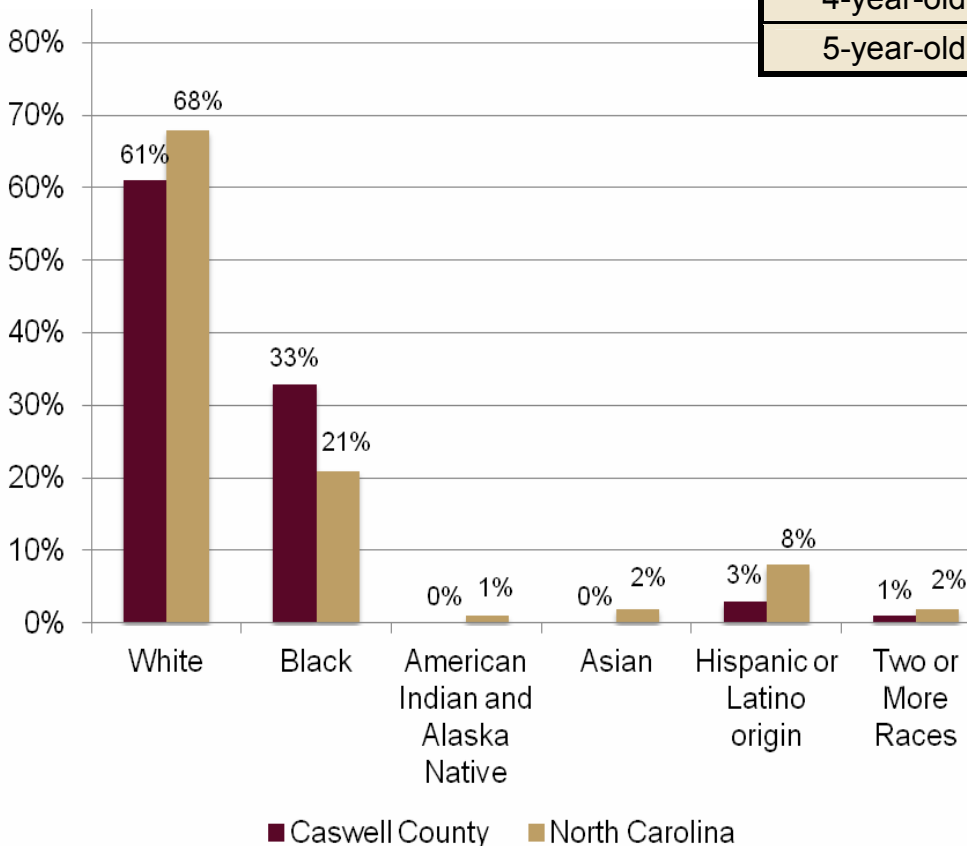
Table 2. Total Number Pre-School Children, by Age

Total Birth – 5 yrs = 1,328

Smart Start target (only 1/3 of 5 yr olds) = 1,172

Certified Population Estimates, July 2010	
Ages	Number of Children
Infants	225
1-year-olds	217
2-year-olds	216
3-year-olds	207
4-year-olds	230
5-year-olds	233 (33%= 77)

Figure 1. 2010 Racial Distribution of Caswell County and North Carolina



II. Quality of Placements

Summary of average star ratings for facilities rated 1-5 stars and the percentages of children in 4- and 5-star-rated facilities

	minimum standards (Both met = high performing standard)	Caswell County	North Carolina
2010-11 Average Star Ratings of Child Placements	3.25	3.86 ✓	3.95
2010-11 Among Children in Regulated Care, % of Children at 4- and 5-Star-Rated Facilities	50%	65% ✓	67%

Quality of Placements By Age

Figure 4. 2010-2011 Average Star Ratings of Child Placements for Caswell County, by Age

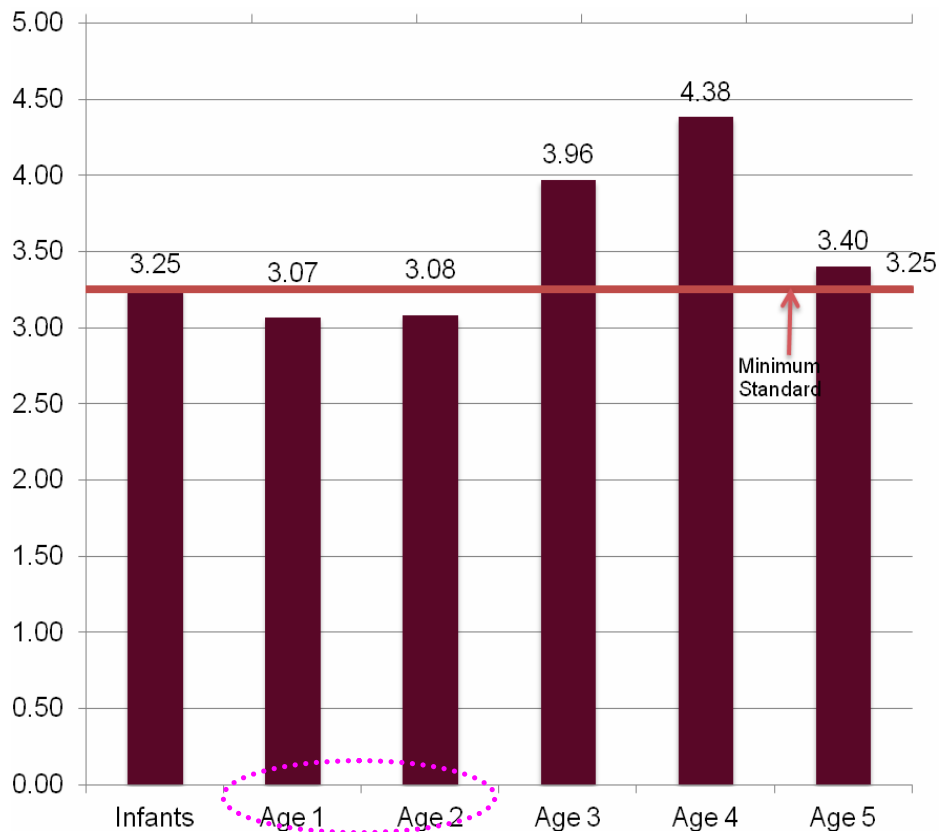
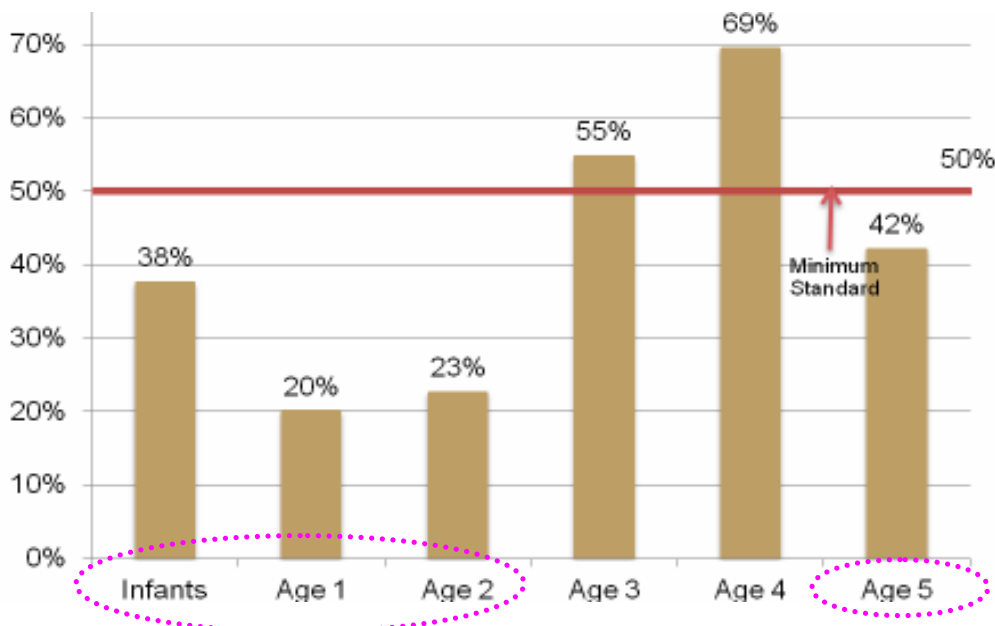


Figure 5. 2010-2011 Among Children in Regulated Care, Percentage of Children at 4- and 5-Star-Rated Facilities for Caswell County, by Age



This is of ALL CARE – GS-110 included here, not in average star rating (only 1-5 stars above)

Overall for Children <u>Receiving Subsidy</u>	minimum standards (Both met = high performing standard)	Caswell County	North Carolina
2010-11 Average Star Ratings of Child Placements Receiving Subsidy*	3.25	4.14 ✓	4.10
2010-11 Among Children in Subsidized Regulated Care, % of Children at 4- and 5-Star-Rated Facilities*	60%	84% ✓	78%
Overall for Children with <u>Special Needs</u>	minimum standards (Both met = high performing standard)	Caswell County	North Carolina
2010-11 Average Star Ratings of Child Placements with Special Needs Receiving Subsidy**	4.0	4.37 ✓	4.34
2010-11 Among Children with Special Needs in Subsidized Regulated Care, % of Children at 4- and 5-Star-Rated Facilities**	75%	94% ✓	92%

(*Break out by Age did not reveal any age group below min or **not enough data available to report.)

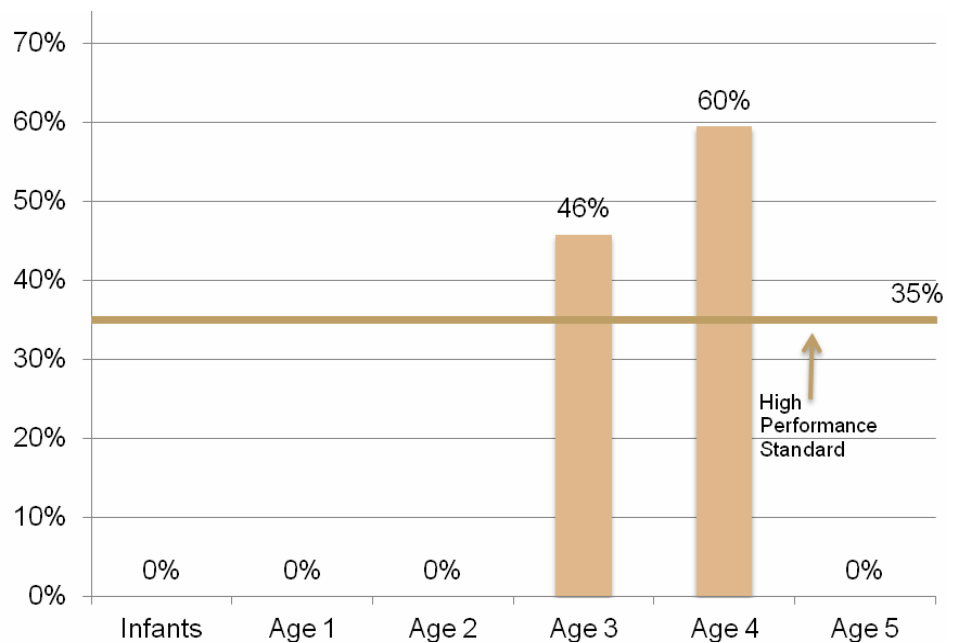
III. Quality of Staff

Overall for Lead Teacher Education	1 st is minimum standard (Both met = high performing standard)	Caswell County	North Carolina
2010-11 Percentage of Children in Facilities With At Least 5 Lead Teacher Education Points***	60%	100% ✓	64%
2010-11 Percentage of Children in Facilities With At Least 7 Lead Teacher Education Points***	35%	0% †	33%
Overall for Administrator Education	1 st is minimum standard (Both met = high performing standard)	Caswell County	North Carolina
2010-11 Percentage of Children in Facilities With At Least 5 Administrator Education Points***	60%	100% ✓	73%
2010-11 Percentage of Children in Facilities With At Least 7 Administrator Education Points	35%	34%	49%

(***Break out by Age did not reveal any differences between ages.)

†Our latest data shows 42%!

Figure 25. 2010-11 Percentage of Children in Facilities With At Least 7 Administrator Education Points for Caswell County, by Age



Overall for Family Child Care Provider Education	1 st is minimum standard (Both met = high performing standard)	Caswell County	North Carolina
2010-11 Percentage of Children in Facilities With At Least 5 Administrator Education Points***	60%	55%	42%
2010-11 Percentage of Children in Facilities With At Least 7 Administrator Education Points	35%	45% ✓	20%

Family Child Care Provider Education By Age

Figure 28. 2010-11 Percentage of Children Enrolled in Licensed Homes With At Least 5 Family Child Care Provider Education Points for Caswell County, by Age

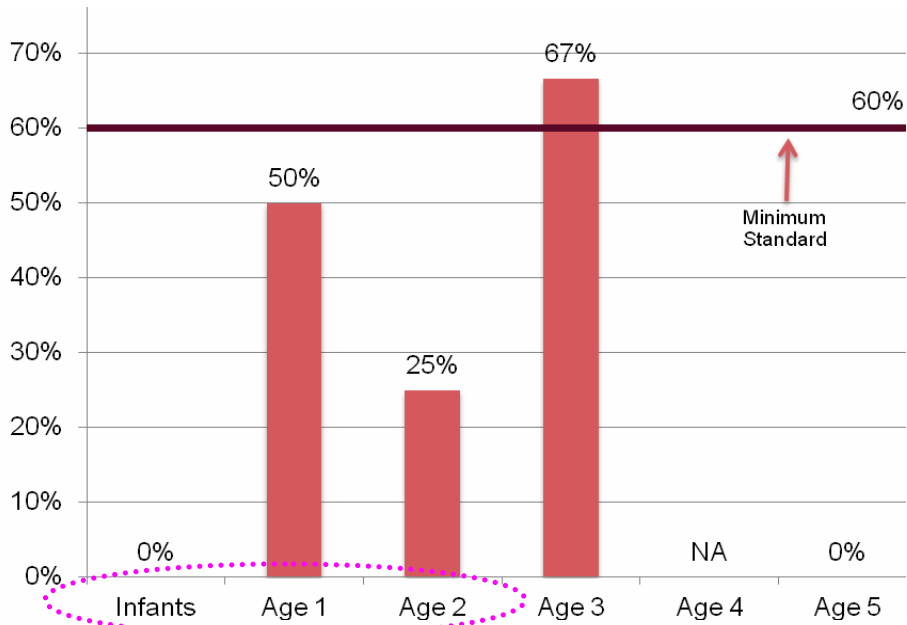
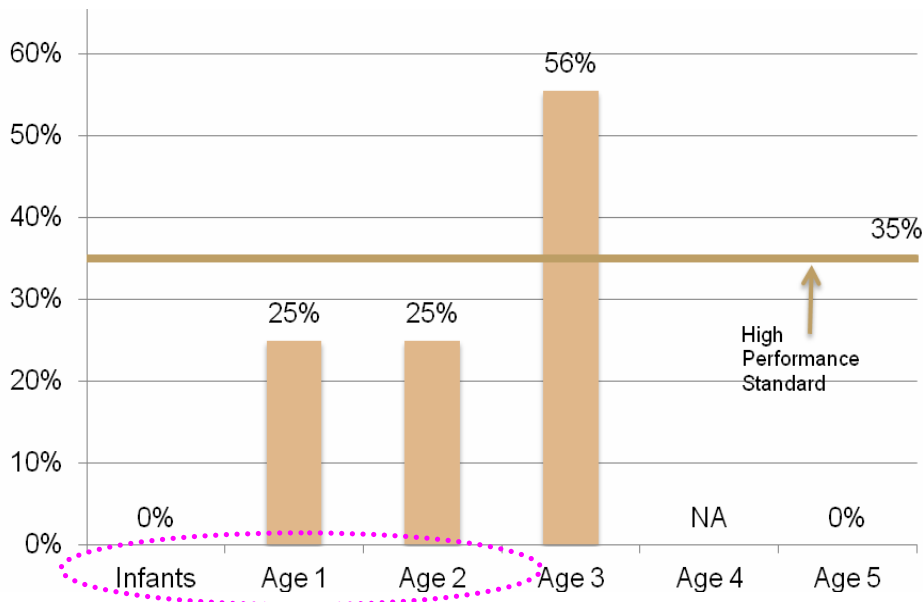


Figure 29. 2010-11 Percentage of Children Enrolled in Licensed Homes Who Are in Facilities With At Least 7 Family Child Care Provider Education Points for Caswell County, by Age



Family Child Care Providers offer care mostly to younger children, but it appears that 3 yr olds are being served disproportionately by those with higher education.

IV. Health

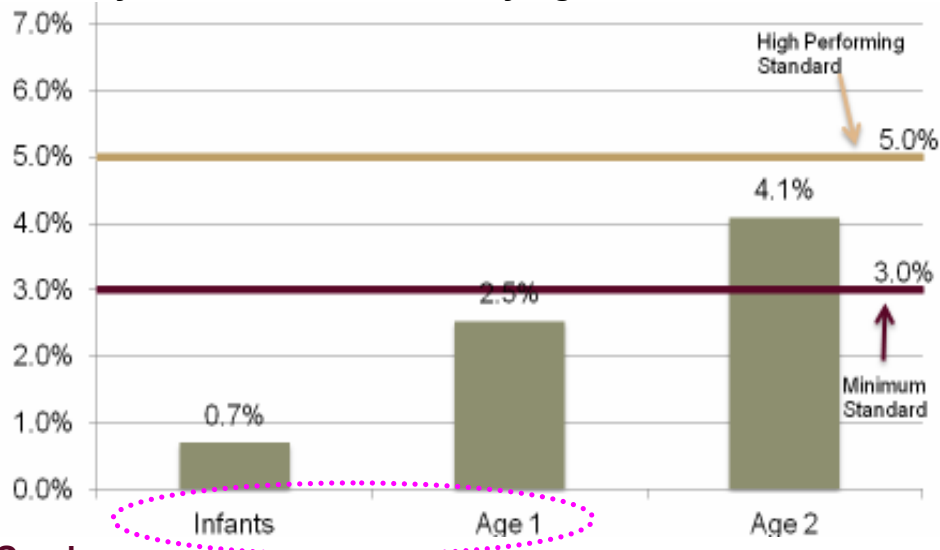
Early Intervention/Special Education Services

Smart Start traditionally considers early intervention data for two age groups: infants and toddlers (age birth to 2) and preschoolers (age 3 to 5). (Demographic data for children ages 3 to 5-years old receiving special services was not available from the NC Department of Public Instruction at the time of this report.)

This information for infants and toddlers is provided by Children's Developmental Services Agency (CDSA) region. **Caswell County is in the Greensboro Region.** The minimum standard is met when 3% of all children age birth to 2 in the county receive these services and when 3% of all children age 3 to 5 in the county receive these services.

EI By Age

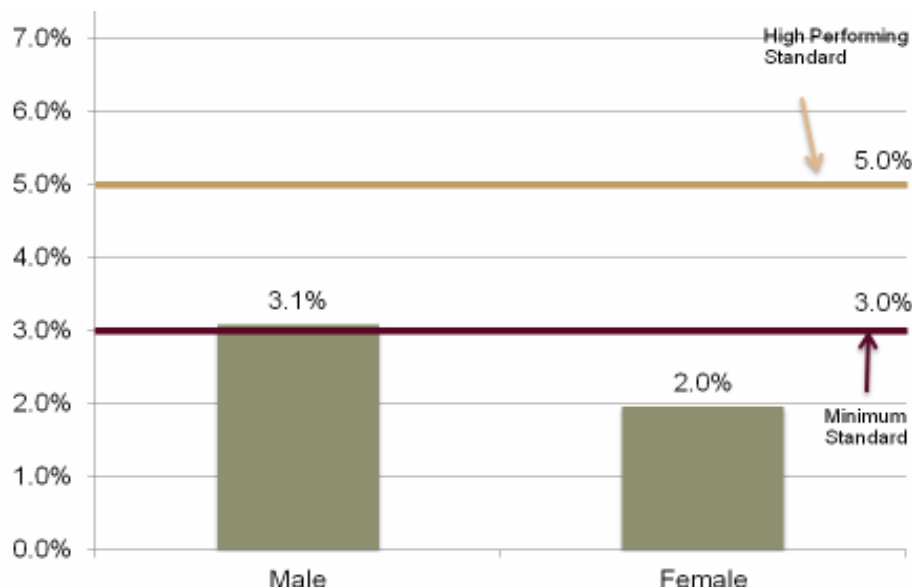
Figure 30. 2010-11 Percentage of Children Age 0 – 2 Years Old in the **Greensboro Region** Who Received Early Intervention Services, by Age



Older toddlers receiving more services is a clear trend across the state, but is more pronounced in our Region.

EI By Gender

Figure 31. 2010-11 Percentage of Children Age 0 – 2 Years Old In the **Greensboro Region** Who Received Early Intervention Services, by Gender



Males receiving more services is a clear trend across the state.

Data reflect reports from the CDSA region of children enrolled in early intervention services on December 1, 2010. Note that this measure is different from that in PBIS which reflects the number of children served at any point over the course of a whole year. PBIS are based on number of children served in a year rather than at any one point in time.

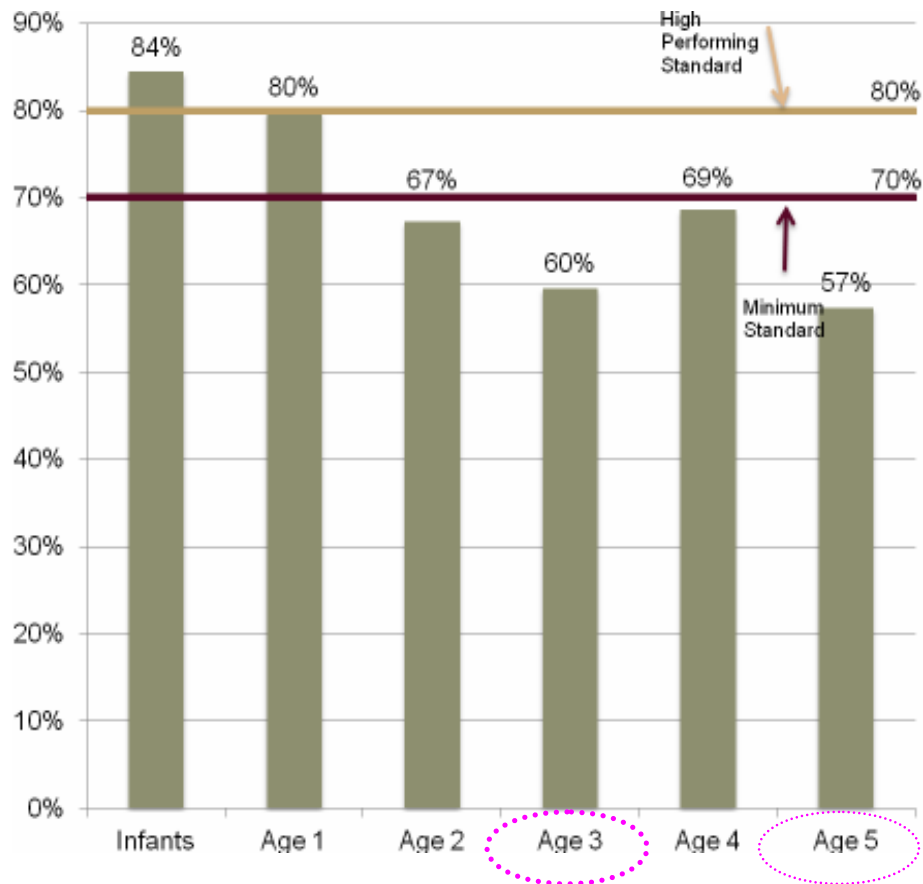
Medicaid Well-Child Exams

The following figures show the percentages of children age birth to 5 who are enrolled in Medicaid and received a well-child exam.

Overall for Medicaid Well-Child Exams	1 st is minimum standard 2 nd is high performing standard	Caswell County	North Carolina
2010-11 Percentage of Medicaid Enrolled Children Age Birth to 5 Receiving Well-Child Exams	70%, 80%	71% ✓	76%

Medicaid Well-Child Exams By Age

Figure 33. 2010-2011 Percentage of Medicaid Enrolled Children Receiving Well-Child Exams for Caswell County, by Age



Gradual decline then bump at age 4 (getting ready for K) with greatest needs at age 3 & 5.